



SULBHI
G R O U P

GROUP PROFILE



Company Overview

Headquartered in Bhilwara, Sulbhi is a leading manufacturer engaged in sand, aggregate, Ready mix concrete & granite business in Rajasthan. Sulbhi is a **market leader** in its major lines of business which includes **manufacturing, mining, supply, and trading** of various kind of stone, sand, aggregate, concrete mix & granite for over two decades.

The Company's footprint extends across **Rajasthan** and is **striving hard to explore neighbouring states.** We are **ISO and QCI certified** and are recognised by the industry for supplies of the best quality material and **excellent customer service and satisfaction.** The promoters mirrors the values of the organisation they heads - professionalism, entrepreneurship and a passionate commitment with **over 20 years experience** in the **manufacturing and supplies.** With highly qualified team, we are able to measure and drive key parameters that contribute to the **plant's high performance and quality output.** The company is equipped with the requisite expertise and experience to undertake major projects and execute them successfully.

We have been working tirelessly on building a strong and long-lasting relationship with our clients and vendors. Sulbhi strictly adheres to set industrial norms and standard to ensure development of world-class products. **Our Quality Control system** ensures top **quality products** and **services** with **zero defects**, as well as **reduces the environmental impact** of our activity.



Our Mission

To be a leading **Manufacturing and Service company** in the market. To provide the highest level of service in the industry while offering superior quality to every project, we handle.

To strengthen our PAN India presence with the mission of timely delivery of all projects we undertake in different verticals. To become the customers' most preferred choice by **attaining excellence in quality** and timely completed value-added projects. To search for fresh opportunities. To strengthen and grow to the leadership position by ensuring continual improvements in operational efficiencies, quality and services. **To continually innovate, develop and adopt state-of-the-art technology in methods and materials to enhance productivity and cost effectiveness.** To develop high performing people that deliver successful projects. To continually improve the competence of our team, and employ diverse, innovative & results-oriented personals, motivated to deliver excellence. To build a safety culture aimed at continually reducing the frequency severity rate towards achieving zero accidents. To identify and mitigate all the environmental impacts arising from our activities and comply with applicable environmental norms.

Our Vision

Be recognized as a pre-eminent manufacturing and services company that fully engages with people, embraces new ideas, use transforming technologies and operates with high ethical standards. We are dedicated to environmental improvements that foster a sustainable future and lead to social and economic improvements in the community we live.



The Product

We **offer a diversified range** of minerals at **most reasonable prices**. Our products are processed using advanced techniques and modern machines at our in-house plant, under the supervision of industry experts. Our products are **quality tested** on well-defined parameters and we ensure **high standard products** are supplied to the clients. Our products are the first choice in the **construction and allied industries** known for its unsurpassed **quality, purity and reliability**. We have strong capabilities to process bulk order at competitive rates and in the stipulated time frame.

AGGREGATE

- All size of Cubical Aggregates
- Bricks, Blocks , Pavers Etc Raw Stone
RMC - M Sand

READY MIX CONCRETE

- Various strengths Product as per requirement
- PQC & DLC (Roads and Industrial Purpose)

M- SAND

- Concrete Sand & Plaster Sand

Business Model

AGGREGATE

Sulbhi **offers** a wide range of **aggregate materials for concrete**. Aggregates are granular materials that are used with a cementing medium to form concrete or hydraulic mortar. They are key ingredients in the manufacture of concrete, mortar, and other construction materials, and are used in the **construction and maintenance of structures** such as Buildings, highways, walkways, parking lots, airport runways and railways. Sulbhi ventured into the aggregates business in the year 2001 and **currently operates large quarries and crushers**. We owns 4 quarries of stone mines in the catchment area to **maintain excellent quality with timely supply of raw material and by extracting good quality rock** with proper fragmentation delivering the products maching international norms.

READY MIX CONCRETE

The Commercial Concrete Vertical is Sulbhi Supreme core business which not only caters to the needs of metro cities and semi-urban areas, but also **serves as a steadfast contributor to the prolific development of urbane India**. Sulbhi caters to a gamut of concrete requirements encompassing lofty buildings to a cherished individual house, solutions for mild exposure to the harshest of off shore works, for soft and aesthetic requirements to the jumbo strength & performance required for prestigious infra and industrial projects. Sulbhi's state-of-the-art plants are an ensemble of high commitment towards service. Right from sating municipal & environmental norms to incessantly braving the never ending traffic snarls, it seems to be a recurring miracle when the Company's concrete laden transit mixers reach the customer's sites on time, every time.

RAW STONE

Raw stone is the basic requirement of any construction activity. Suitable type stone is provided to end users as well as for raw material to our plant for aggregate man- ufacturing. Our quarries are **approved for usage by various government departments**.

M- SAND

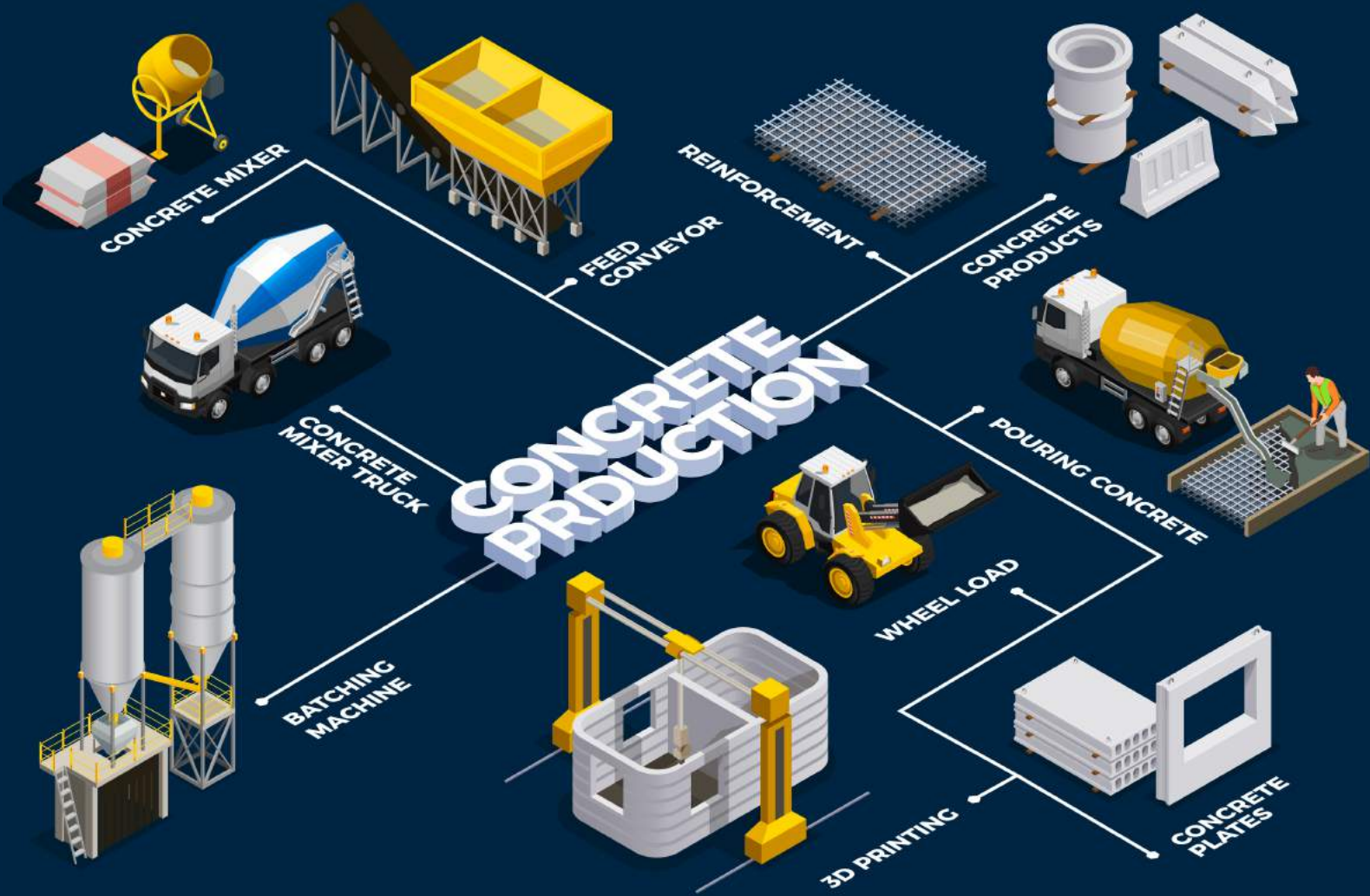
The M- Sand plant of Sulbhi is well known for its quality, **consistency and in time availability**. Sulbhi provides M sand is a form of artificial sand, manufactured by crushing large hard stones, mainly rocks or granite, into fine particles, which is then washed and finely graded. It is widely used as a substitute for river sand for construction purposes, mostly in the production of concrete and mortar mix.

The Technology

Our state-of-the-art infrastructural facility and ultramodern processing unit has enabled us to **establish a strong foothold in the industry**. The organization has outfitted hi-tech machines and equipment at its processing plant to **efficiently meet the rising demands of our products in the different sectors of the industry**.

Our fast growing **highly reliable and wide spread distribution network** covers almost every major city in 100 Km radius of Bhilwara, which allows us to deliver our products **within the shortest possible time**. The competitive edge in manufacturing world is created by way of **using world class technologies**. Our ultramodern processing facilities and efficient workforce enables us to address the diverse needs of different industries in the most efficient manner.

EQUIPMENT NAME	COMPANY NAME
JAW CRUSHER	SANDVIK (SWEDEN)
JAW CRUSHERS	MECH TECH BARODA
SAND WASHING PLANT	WEIR MINERALS (WARMAN , USA)
TRAILERS 22 WHEELERS	ASHOK LEYLAND
TIPPERS 12 WHEELER	ASHOK LEYLAND
TIPPERS 10 WHEELER	ASHOK LEYLAND
TIPPERS 6 WHEELER	ASHOK LEYLAND AND TATA MOTORS
EARTH MOVING EQUIPMENTS	L&T
LOADERS	LIUGONG
BACKHOE LOADERS	JCB
READY MIX CONCRETE PLANT	SWING STETTAR
STATIONERY PUMP	SWING STETTAR
TRANSIT MIXERS	SWING STETTER
AIR COMPRESSORS	ATLAS COPCO



Technology Partners



Marketing Strategies

WHY US?

Keeping up with your competitors isn't easy. **You have to make the necessary updates and expansions to match the best.** When you choose Sulbhi you can rest easy knowing our expertise. **we'll work with you on your project, large or small.** We have an excellent success rate, and our long standing relationships with clients is what we cherish always. **Quality assured minerals at affordable prices in shortest possible time frame is our mantra.** Our ultramodern processing facilities and **efficient workforce enables us to address the diverse needs** of different industries in an efficient manner.

Following factors have contributed in our success.



Cubicle Size
Material



Modern Processing
Techniques



Modern Processing
Techniques



Ethical Business
Practices



Transparent Business
Dealings



Prompt Delivery
Schedules

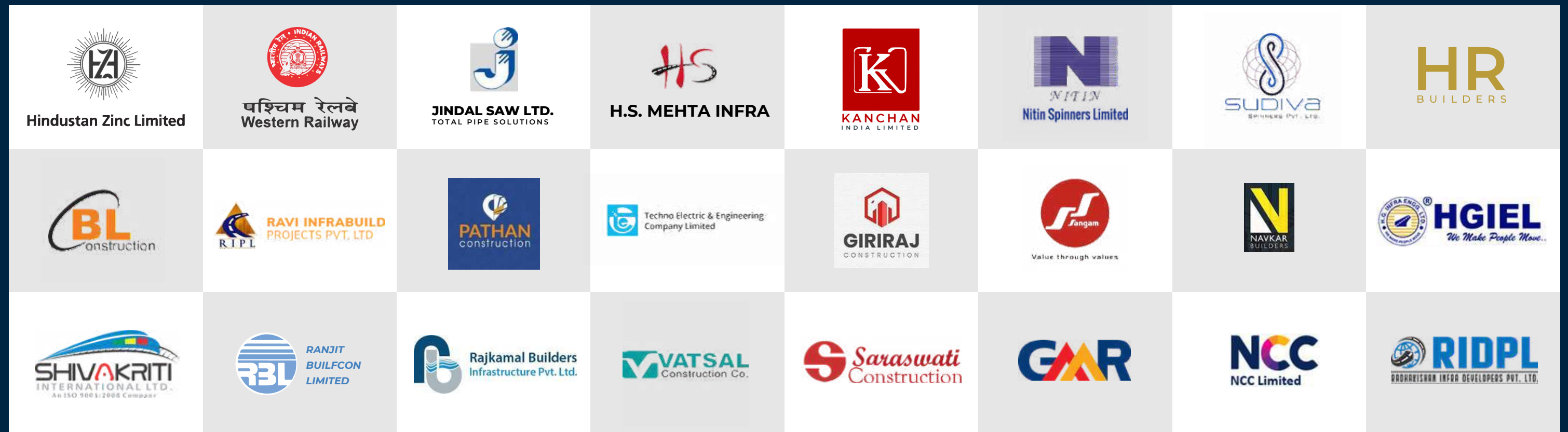


Company USP

	QCI Certified		Consistent Quality	
ISO Certified		Accurate Quantity		Primary Competitive Advantage
	Good Financial Position & TQM		Large Production Capacity	
Experienced R&D Department		Large Product Line		Quality Measures Testing Facilities

The Customer / Portfolio

Our fast growing highly reliable and wide spread distribution network covers almost every major city in 100 Km radius of Bhilwara, which allows us to deliver our products within the shortest possible time. The competitive edge in manufacturing world is created by way of using world class technologies. Our ultramodern processing facilities and efficient workforce enables us to address the diverse needs of different industries in the most efficient manner.



OUR TEAM

Great things in business are never done by one person.
They're done by a team of people.



Ram Narayan Melana
Chief Executive & Business Head

Mr. Melana is Commerce Graduate and is proprietor of M/s Shri Sulbhi Kutir Udyog. He mirrors the values of the organisation he heads - professionalism, entrepreneurship and a passionate commitment to advancing the interests of all stakeholders. He started his carrier by setting up a Small Stone Crusher unit in the Year 2004 under the REGP scheme of KVIC. Under his leadership, SME overcame multiple challenges and emerged stronger with a sharper focus on profitable growth. In his personal capacity, Mr. Melana remains deeply committed to the community and is appointed as Trusty of Ram Snehi Hospital, Bhilwara, Trustee in Rameshwaram Trust Bhilwara and Treasurer of Stone Crusher Association, Bhilwara.



Vinod Kumar Melana

Mr. Vinod is a Commerce Graduated and looking after liason work of the group. He is a dedicated environmentalist and over the years planted over 1.2 Lakh plants and planning to plant 1 Million trees in Bhilwara district and was instrumental in developing over 100 water harvesting points with the help of support group "Apna Sansthan". He is deeply associated with RSS in the capacity of Khsetra Sharirik Pramukh of Rajasthan and is Secretary of NGO Apna Sanastha working towards tree plantation and water harvesting.



Manish Melana

Mr. Manish Melana is the CEO for the group. Hailing from Bhilwara, completed his graduation from Syddenam College Mumbai. Manish is armed with multiple professional qualifications and holds CA (Chartered Accountant) and CS (Company Secretary) memberships. He commenced his professional journey with Mahajan & Aibra followed by Barclays Bank Mumbai. He then joined the Heinz India P. Ltd. as assistant manager-finance. With an entrepreneurial mindset, drive, and foresight, he joined the family owned business and from last one decade strived hard to explore multiple verticals and has taken the business to new heights.



Mrs. Sidhika Melana

Mrs. Melana is a qualified Chartered Accountant and started her career with M/s Haribhakti & Co., Mumbai followed by M/s Swastika Investmart Ltd in the field of Finance and Accounts. Having worked with M/s Suvidhi Rayons Pvt Ltd, Bhilwara as Manager-Accounts. From past 6 years Mrs. Melana is assumed responsibilities with Chartered Accountant Firm M/s Melana & Company, Bhilwara, efficiently handling finance, account, taxation, legal & company law.



Kartik Melana

A technology enthusiast, He always wanted to be a successful businessman. Kartik, immediately after his graduation became involved in the development of the family-owned business. Young and dynamic leader from commerce field bringing in fresh energy and thoughts in the group.



Arpit Somani

I Am Arpit Somani 32 years young born n bought up in indore. I have done my MBA in Marketing from Indira Institute of Management Pune. Initially I have worked with Usha & Titan for 7 years and had a great learning lessons. Today whatever I have learnt or whatever today I am doing is the only learning experience I had during my Job period. During my job period I always had a very clear vision of having my own business and I had a faith that someday I will make this true. My learning and job period in Titan gave an opportunity for business and after 7 yrs of Job I came into distribution of Titan. I always believed that before starting any business one should have a thorough knowledge of working, which I gained from my job. Now I am into retail and trade business associated with Titan Aditya Birla and Godrej & Boyce Mfg. Co. Ltd



CONSTITUTION OF SULBHI GROUP



GRANITE



GASES



FASHION

Granite

About the Company

Guniya Stones is a brand owned by **Rahul Sulzcon Pvt. Ltd.** The company is based out of **Bhilwara, Rajasthan**. The vision of the company is to provide an unmatched quality of **Granites and Sandstones**. We have developed a state of the art infrastructure facility consisting of three **multi blade cutters, twelve head automatic line polisher, gantry crane and edge cutting machines**. The plant has a **monthly capacity** to cut and **polish** more than **75000 square feet granite** with an option to double the capacity within the same facility.

About the Product

We deal exclusively in granites and sandstones. The blocks are sourced from the quarries located in **Rajasthan, Gujarat and Madhya Pradesh**. We deal in a wide variety of granites with more than **15 colors** to offer **comprising natural granites** as well as converted granites. The company has a **promised exclusive supply of white granite** recently discovered in **Rajasthan** which bears a close resemblance to the Bianco Antico variety found in Brazil. We have multiple varieties in red color ranging from **Jhansi Red to Lakha Red**. **Other varieties include Rajasthan Black, Guniya White, Pearl white, Icy Blue, Tropicana Blue, Tiger Skin, Crystal Yellow, Tannish Brown, Asian Top, Dazzle Brown sand Stones cobbles Etc**

Offered Sizes



Thickness
16 mm to 30 mm



Height
3.25 feet (Max.)



Length
11 feet (Max.)

Offered Finishes



Polished



Semi-polished
(Lappato)



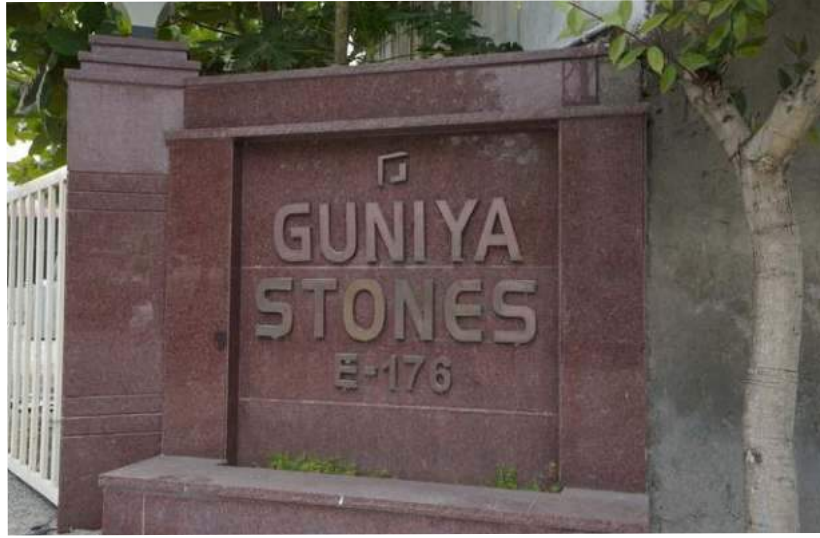
Sand Blasted



Length



Honed



Gases

About the Company

The firm is based out of **Bhilwara, Rajasthan**. The vision of the firm is to provide an unmatched **quality of oxygen, nitrogen and other non chemical industrial and medical gases**. We have developed a state of the art infrastructure facility consisting of 350 KVA compressors, various types of filters and cooling tower machines. The plant has a **monthly capacity** to fill more than **21,000 cylinders with the same facility**.

Vision

The vision of the company is to **provide an unmatched quality** and timely delivery of oxygen, nitrogen and other non-chemical industrial and medical gases. We have developed a state of the art infrastructure facility consisting of **350 KVA compressors, various types of filters and cooling tower machines**. The plant has a **monthly capacity** to fill more than **25,000 cylinders** with the same facility

Gases Delivered



Industrial Oxygen



Medical Oxygen



Carbon Dioxide



Industrial L.P.G



Nitrogen

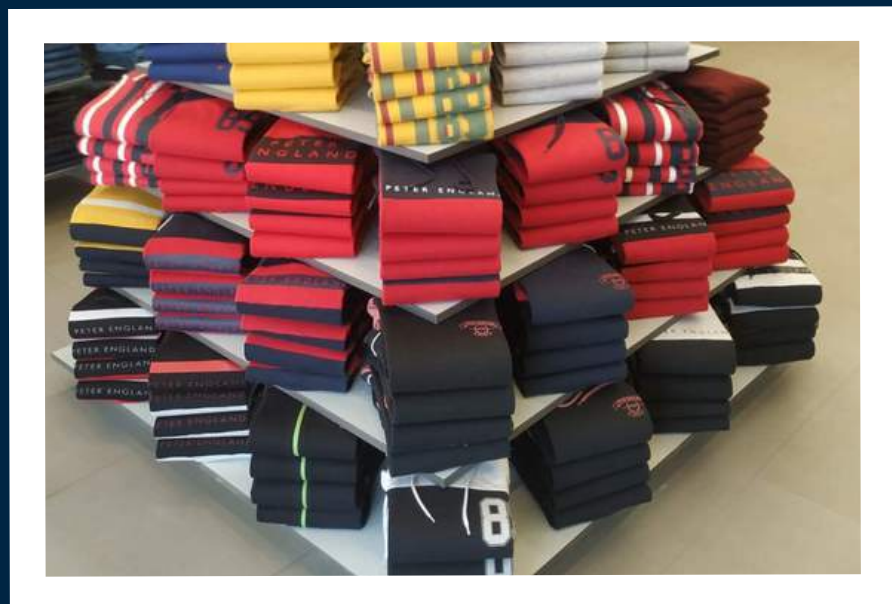
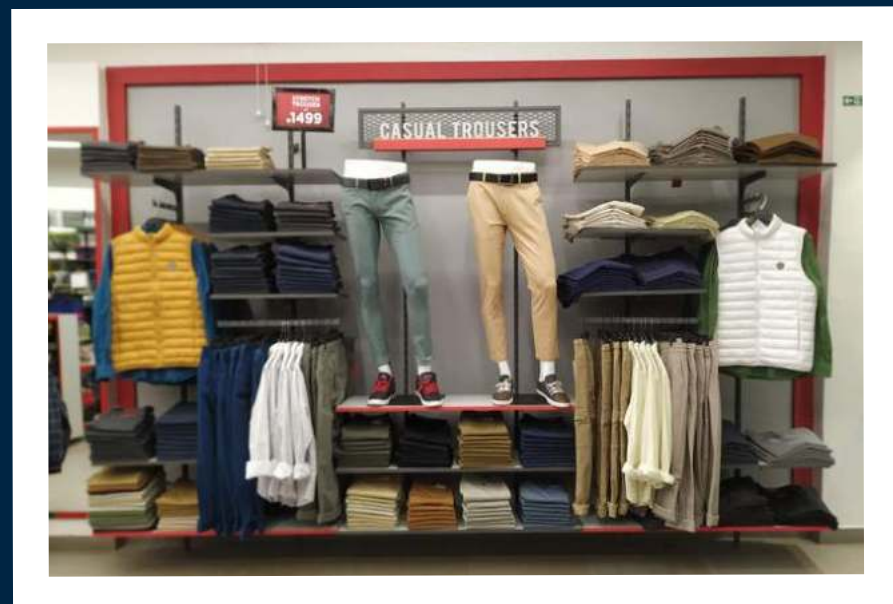
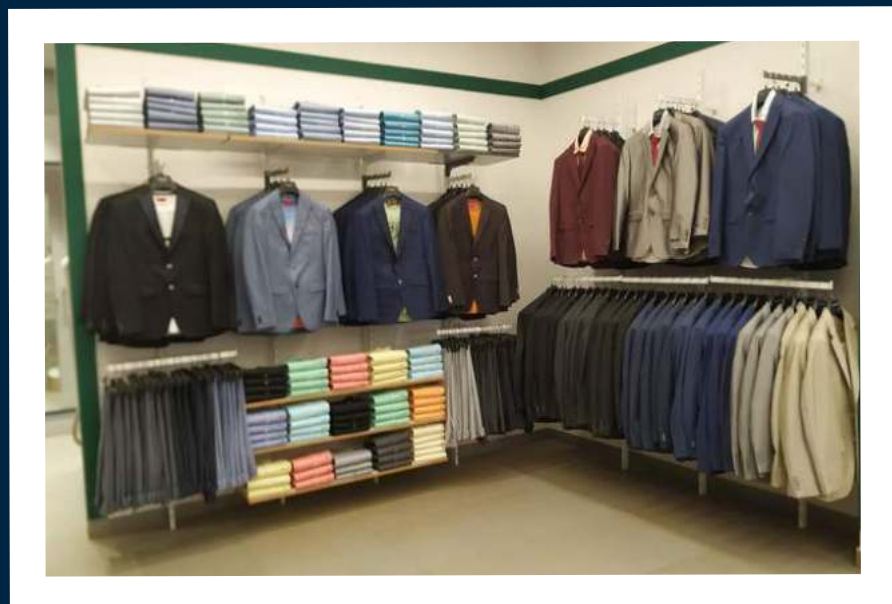
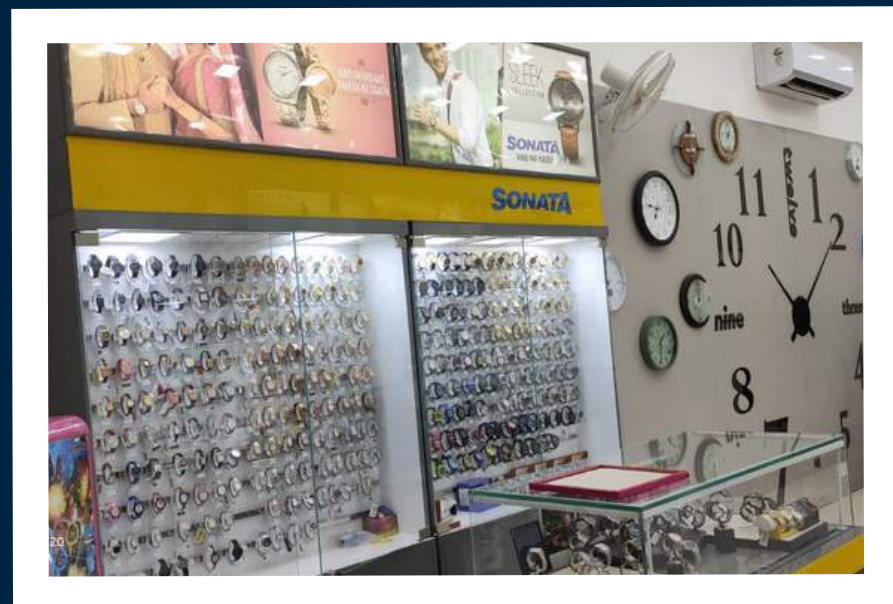
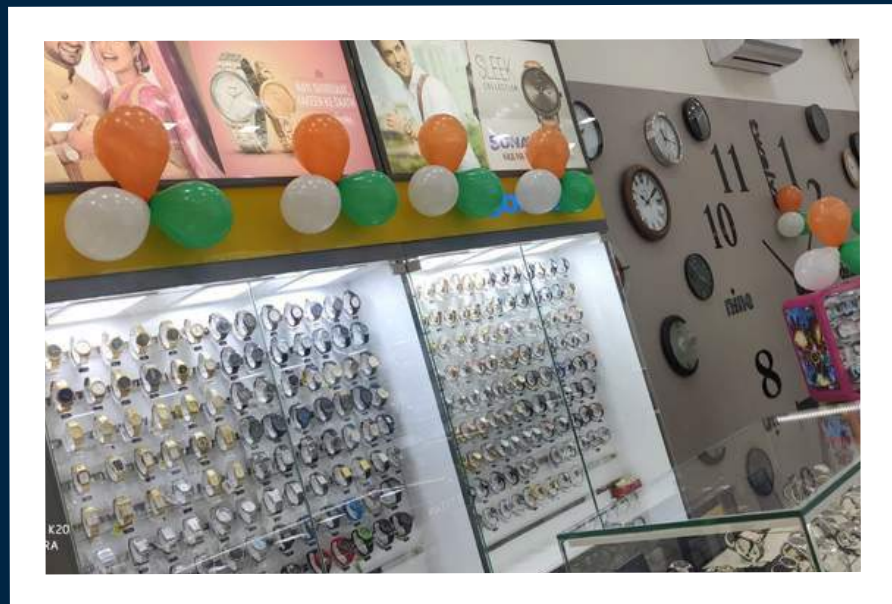


Dissolved Acetylene



Liquid Nitrogen





Fashion

About the Company

Company started its business by opening a Model store of Titan Company Limited on 11 July 2019 at **Khargone, Madhya Pradesh**. It's been very first time in Khargone, that a model store has been inaugurated. **Titan, Fastrack, Sonata, Skinn perfumes**, Titan Wallets and Belts are the entire brand to deal in with. We also have **licensed dealer** for international brand watches by Titan such as **Tommy Hilfiger, Kenneth Cole and Lee Cooper**.

Company has taken a step ahead with the hands shake of Titan Company Limited by **receiving distribution network** of watches for **Bhopal region, Madhya Pradesh**.

- To handle approx. 95 dealers directly and 75 dealers indirectly.
- To cover almost ½ of MP region.
- Aditya Birla Fashion Retail Limited

Company has opened its wings with ABFRL by signing a contract to open 5 retail stores in B tier or C tier cities of Madhya Pradesh. WE started it by opening a Peter England Showroom at **Ganjbasoda, Madhya Pradesh** on 30 October 2021.



Business Network

We worked on several states in India

1.

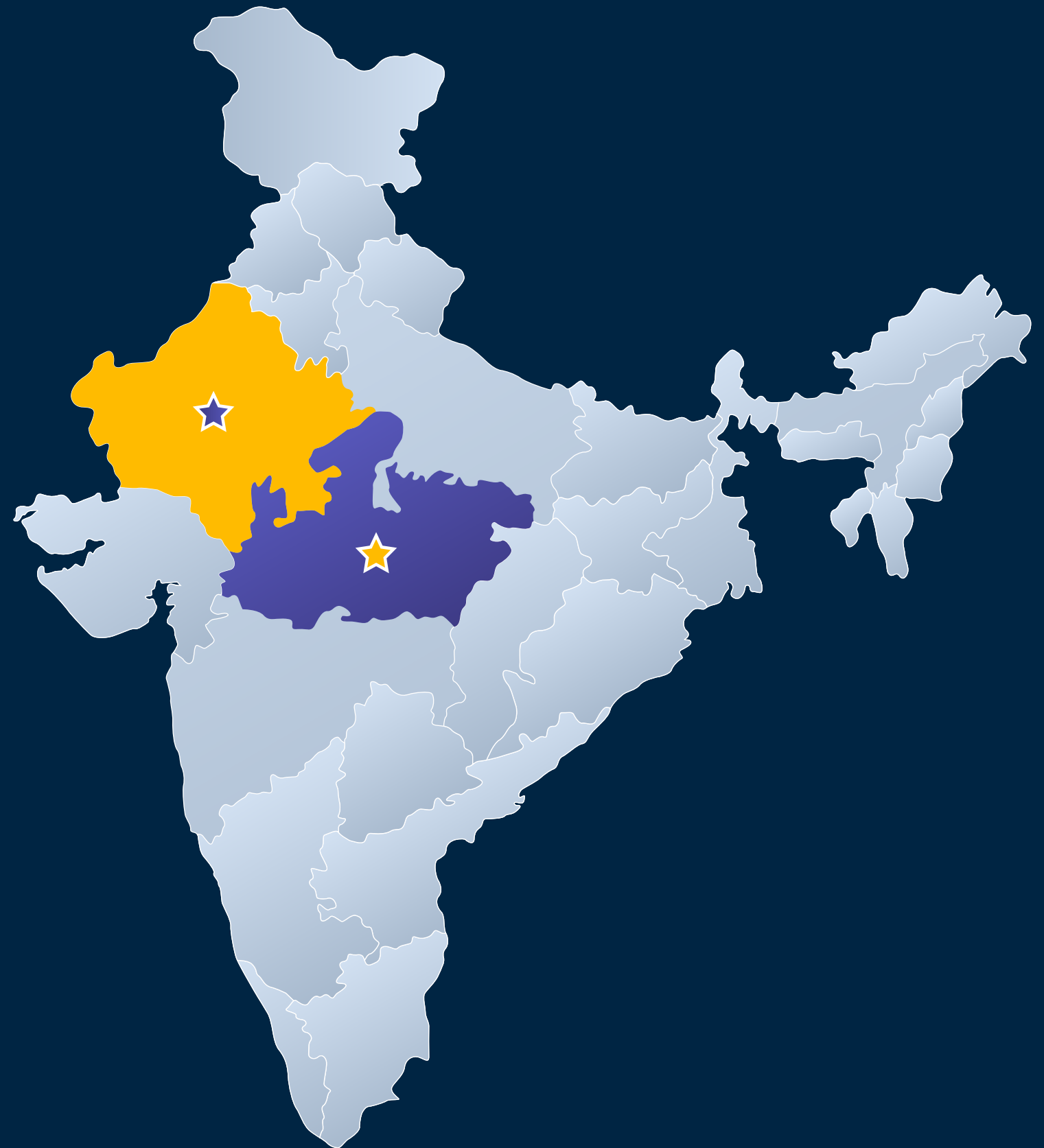
RAJASTHAN

DUNGARPUR, HARIGARH, SAMODI,
SWAROOPGANJ

2.

MADHYA PRADESH

BHOPAL, INDORE, KHARGONE, GANJ
BASODA, MEGH NAGAR, JHABUA





4. NAVKAR CITY CENTRE, KANCHIPURAM, BHILWARA - 311 001 - RAJASTHAN - INDIA



958 762 2777 | 958 782 2777 | 941 411 4177



SULBHIGROUP.COM



INFO@SULBHIGROUP.COM